

ELMO

Solutions

An IRISCO company

Microsoft
Dynamics ERP

SOLIDWORKS

AUTODESK

Agni Link

Live, "Hot" CAD-To-ERP Data Integration

Agni Link is a companion application to CAD/PLM/PDM software that establishes a bidirectional on-line connection between CAD product data and its counterpart in the ERP environment. Every time a CAD document is updated, Agni Link analyzes both CAD and ERP data, resolves discrepancies, and presents the user with a form to allow data editing, if desired. Once data is edited and validated by Agni Link, product data will be simultaneously updated in both CAD and ERP environments, thus ensuring perfect synchronization of data, while virtually eliminating redundant data entry.

Agni Link also automatically updates the ERP Bill of Materials (BoM) to reflect any changes in the composition of CAD assemblies. Moreover, with some data elements such as Raw Materials, Component type, etc., Agni Link will only allow valid entries, as defined by the ERP application, thus greatly reducing costly errors on the factory floor caused, among other things, by the use of the wrong raw materials or improper communication of manufacturing instructions.

Based on the time-proven Elmo software foundation, Agni Link was developed with designers in mind. Its purpose is primarily to allow those people to get the most out of product data that is generated, either automatically or manually, during the design process. Those people may be involved in a wide range of business processes:

- ▶ R&D
- ▶ Design and drafting
- ▶ Production & manufacturing
- ▶ Cost & estimating
- ▶ Sales & marketing
- ▶ Quality assurance

Benefits

- ▶ Quick Return On Investment
- ▶ Total User Control
- ▶ Eliminates redundant data entry
- ▶ Reduces errors on factory floor
- ▶ ERP and CAD data **always** in sync
- ▶ Reduces ERP license requirements
- ▶ Customer-configurable... no programming required!
- ▶ Multilingual
- ▶ Supports numerous CAD applications
- ▶ Easy implementation & use
- ▶ Unmatched customer support

Elmo Solutions Inc.

Web: www.elmosolutions.com

Email: info@elmosolutions.com

North America: +1.866.522.3207

Worldwide: +1.418.623.3834



agni LINK

Features

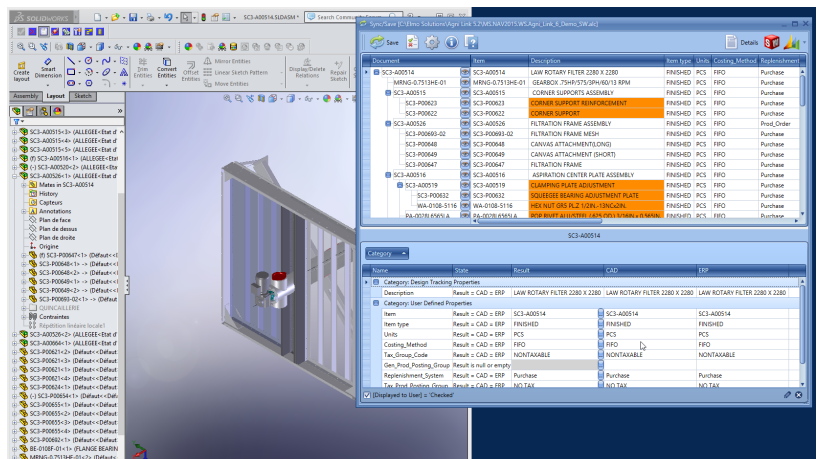
- ▶ Simultaneous creation / update, in both CAD and ERP systems, of product data :
 - ▶ Parts
 - ▶ Assemblies
 - ▶ Bills of Materials
 - ▶ Routings
- ▶ Synchronizes all BoM levels in one single operation
- ▶ Cloud-ready Web Services support
- ▶ Data is validated against acceptable values found in ERP system
- ▶ On-the-fly printing and generation of drawings in PDF format
- ▶ Supports most ERP applications
- ▶ Powerful data editing (find, search & replace, copy & paste) capabilities
- ▶ Makes ERP data accessible to CAD users (e.g. costing, vendor, availability)
- ▶ Automatic updates
- ▶ Multi-threading
- ▶ Entirely customer-configurable

CAD/PLM/PDM Platforms

- ▶ SolidWorks
- ▶ SolidWorks Enterprise PDM
- ▶ Autodesk Vault (all editions)
- ▶ Autodesk Inventor
- ▶ AutoCAD
- ▶ Autodesk Mechanical Desktop
- ▶ AutoCAD Mechanical
- ▶ AutoCAD Electrical
- ▶ Autodesk Architectural Desktop
- ▶ More to come

For further information, or for a free white paper on CAD-To-ERP data integration :

<http://www.elmosolutions.com>



Parts and assemblies courtesy of Law-Marot-Milpro